

Configure Microsoft Outlook 2003

Open Microsoft Outlook 2003



The wizard should walk you through most of the setup. It will ask you for your name, e-mail address, what type of e-mail account to set up, and many other things. The information you need is as follows:

Server type: POP3

Incoming Server (POP3): mail.pdswireless.com

Outgoing Server (SMTP): mail.pdswireless.com

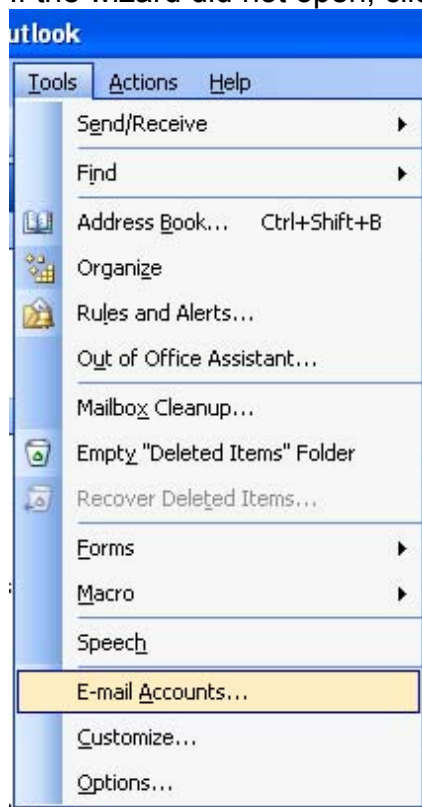
E-mail address: [Your Username]@pdswireless.com

Your Name: (Self-Explanatory)

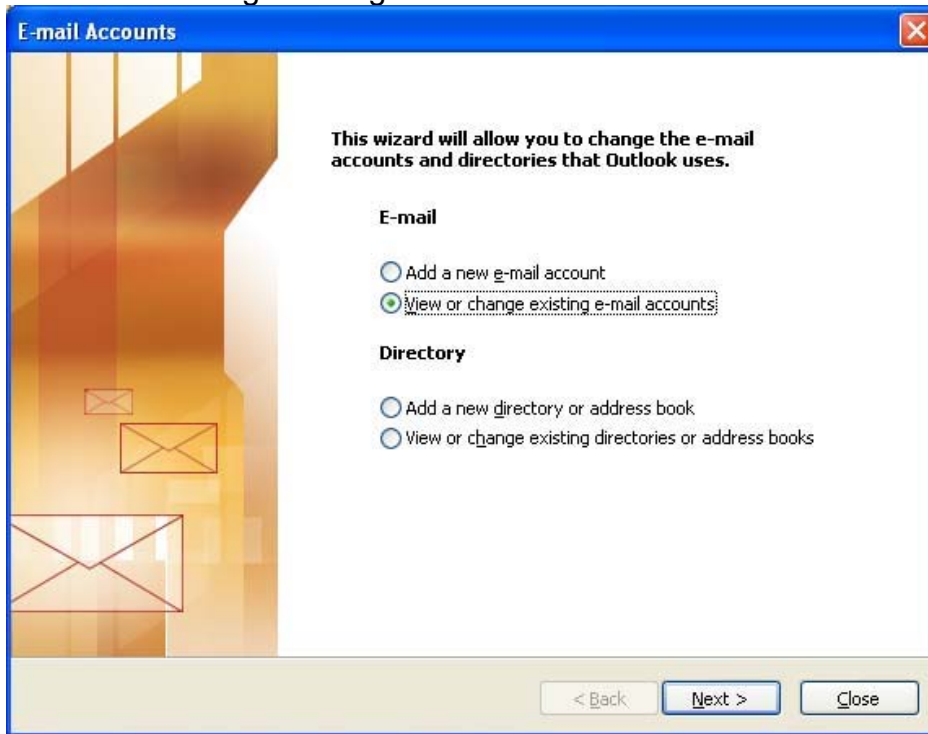
Account: [Your Username Only]

Password: [Your Password]

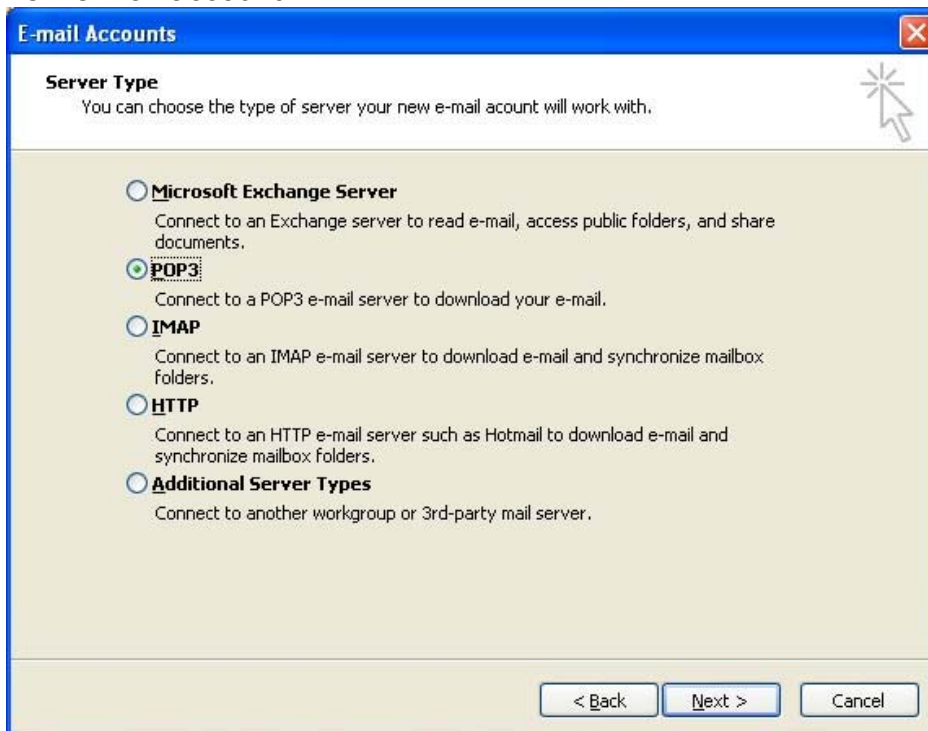
If the wizard did not open, click on Tools > E-mail Accounts.



Then View/Change Settings



Then you will see your account listing. You will want to click on “Add” to create a new e-mail account.



Fill out all the information with that posted at the beginning of these instructions.

E-mail Accounts

Internet E-mail Settings (POP3)
Each of these settings are required to get your e-mail account working.

User Information
Your Name:
E-mail Address:

Server Information
Incoming mail server (POP3):
Outgoing mail server (SMTP):

Logon Information
User Name:
Password:
 Remember password
 Log on using Secure Password Authentication (SPA)

Test Settings
After filling out the information on this screen, we recommend you test your account by clicking the button below. (Requires network connection)

One final step is to click on “More Settings” at the bottom right-hand corner of the E-mail Accounts page. Goto the second tab “Outgoing Server” and select “My outgoing server (SMTP) requires authentication.”

Internet E-mail Settings

General **Outgoing Server** Connection Advanced

My outgoing server (SMTP) requires authentication

Use same settings as my incoming mail server
 Log on using

User Name:
Password:
 Remember password

Log on using Secure Password Authentication (SPA)
 Log on to incoming mail server before sending mail

Click OK > Next > Finish... You now can send/receive e-mail through Microsoft Outlook 2003.